



2026 NURSERY BROCHURE

Welcome to the Little Tug Boat

Established in 1990, we have been caring for children in the local Fulham area for over 30 years. We are a small, independent, family-owned Nursery and our beautiful, Victorian house is home to 37 children each day.

We understand what an important decision it is choosing the right Nursery for your child and for your family.

At Tug Boat, we are committed to helping every child LEARN WELL in a loving and nurturing home from home environment. Most importantly, we celebrate every child's individuality to build confidence, creativity and independence through their early years.

We hope that over the coming pages, we are able to give you a flavour of our mission and what makes our Nursery special.

the Tug Boat Crew x

Our mission

We are committed to ensuring every child at Tug Boat has both exceptional learning experiences and an environment which supports their health and well-being.

Simply put, we believe every child should



It is because of this that we invest in the highest quality Crew and constantly review our Curriculum to give every child the best learning experiences



It is why having a chef who cooks delicious, nutritious homemade meals from scratch, with high quality ingredients is so important to us



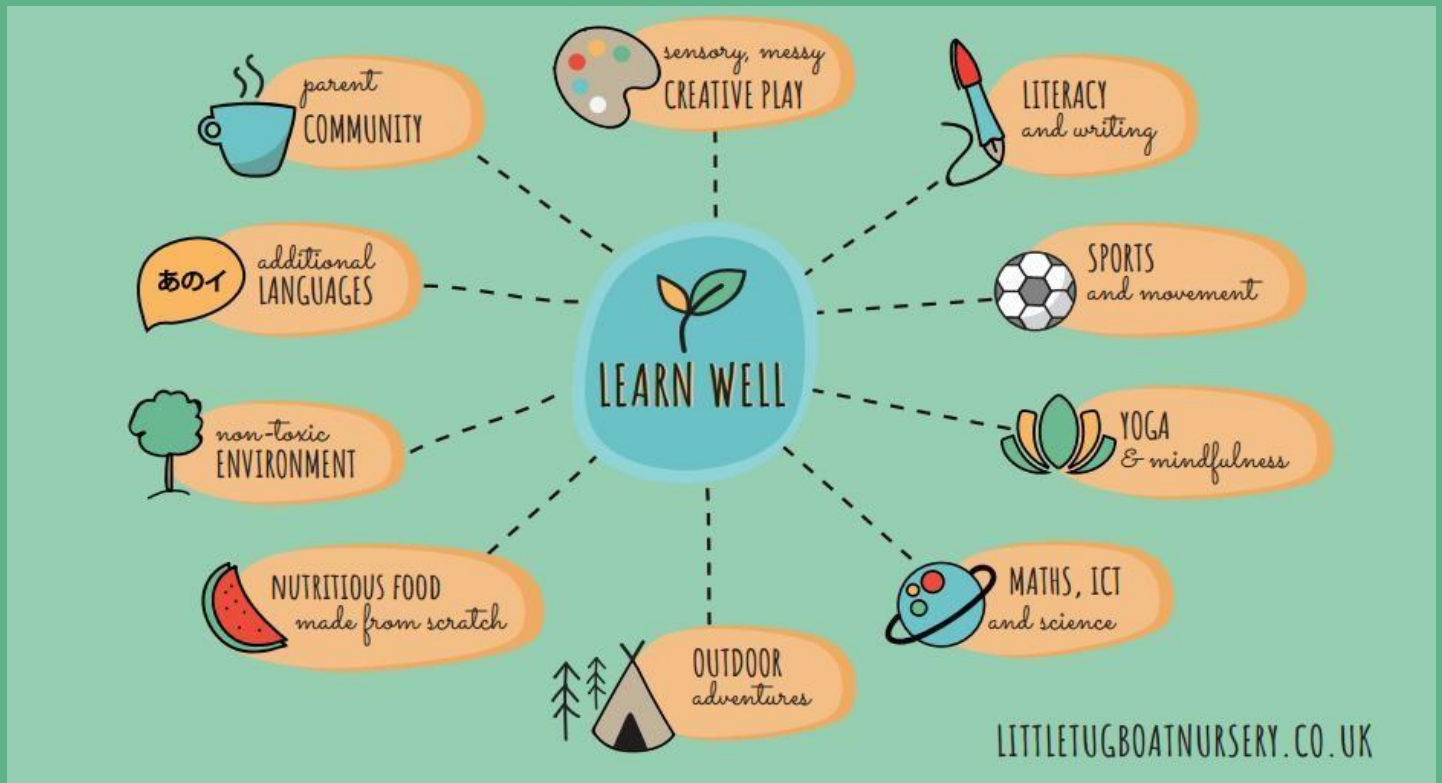
It is because of this we strive for a non-toxic environment – one where we choose to use plant based cleaners wherever possible, which do not leave harmful residues on surfaces or fumes in the air.



It is the reason we introduce activities which support every child's overall well-being from an early age...from outdoor adventures to yoga and sports.

Learning at the Little Tug Boat

Our diverse Curriculum is rooted in the Early Years Foundation Stage (EYFS) and inspired by other philosophies including the Curiosity Approach and Forest School.



An example weekly timetable

MONDAY	TUESDAY	WEDNESDAY	THURSDAY	FRIDAY
あのい additional LANGUAGES	OUTDOOR adventures	YOGA & mindfulness	SPORTS and movement	MUSICAL moments

Meals at the Little Tug Boat

Food is so important at Tug Boat – after all, the children need plenty of energy for their busy days.

Our full-time Tug Boat Chef cooks delicious and nutritious homemade meals from scratch. Our varied menu includes dishes from around the world and plant-based meals, all developed to tantalize children's little tastebuds.

Our Chef carefully chooses high quality ingredients for every meal; our meat is free-range or organic, our dairy is organic with milk delivered daily by the milkman & fruit and veg is plentiful.

WE ARE A NUT FREE NURSERY AND ARE ABLE TO SUPPORT CHILDREN WITH SPECIFIC DIETARY REQUIREMENTS.

OUR PROMISE



Balanced menu full of wholegrains, high quality proteins, healthy fats and lots of fruit & veg



Made from scratch, and with love by the Tug Boat chef



High quality ingredients; our meat is free-range or organic, our dairy is organic with milk delivered daily by the milkman & fruit and veg is plentiful



Active reduction in products and ingredients containing anything artificial & no excess sugar/ salt



Developed to engage the children through fun & creativity

SAMPLE MENU

BREAKFAST	SNACK	LUNCH	TEA
<ul style="list-style-type: none">● Variety of Cereals & Wholemeal Toast● Organic Yoghurt and Fresh Fruit	<ul style="list-style-type: none">● Oat cakes with Cream Cheese and Pear	<ul style="list-style-type: none">● Salmon and Broccoli Pasta Bake● Sweetcorn● Fresh Fruit	<ul style="list-style-type: none">● Mixed Bean Curry with Vegetable Rice and Cherry Tomatoes (v)

Important Information

OPENING HOURS:

8.00 – 18:30 Monday – Friday

Little Tug Boat will be closed for Christmas from Thursday 24th December 2026 – 1st January 2027 inclusive. The Nursery will re-open on Monday 4th January 2027.

The Nursery will also be closed for one inset day during the year for staff training. This inset day will be communicated in advance by the Nursery Manager.

2026 MONTHLY FEES

	2 days p/w	3 days p/w	4 days p/w	5 days p/w
Full Fees	£1061	£1563	£2010	£2441
With 15hr Working Parent Entitlement funding for 9m-2yo	£575	Not applicable – see 30 hour funding fees		
With 30 hr Working Parent Entitlement funding for Babies 9m-2 yo	Not available	£616	£1098	£1556
With 15hr Working Parent Entitlement funding for 2-3yo	£598	Not applicable – see 30 hour funding fees		
With 30 hr Working Parent Entitlement funding for 2-3yo	Not available	£653	£1140	£1578
With Universal 15 hour entitlement for 3-4yo	£740	£1220	£1674	£2126
With Universal 15 hour entitlement + Extended 15 hours for 3-4 yo	Not available	£966	£1380	£1796

Please see separate information relating to the Working Parent Entitlement and Universal 15 hour 3-4 year old funding Full-time Sibling discount: 10% on lower sibling fee

Fees are calculated to take the closure dates listed below into account. These, along with UK Bank Holidays are not charged for. Fees reflect a full year, divided by 12 months , meaning the price payable each month is the same

No refunds or swaps will be given for any reason, including for sickness or holidays

You may be eligible for tax-free childcare, and you can find out more at www.gov.uk/get-tax-free-childcare

3 Finlay Street, SW6 6HE
0207 731 6648

FAQ's

WHAT ARE THE STAFF TO CHILDREN RATIOS ACROSS THE AGE GROUPS?

We comply to ratios as defined by Ofsted. These are

- 1 member of Crew: 3 children for those under the age of 2 years
- 1 member of Crew : 5 children for those aged 2 -3 years
- 1 member of Crew: 8 children for those aged 3 years and above

We choose to employ qualified staff as far as possible in order to maintain outstanding learning experiences for every child. We may employ apprentices who are studying for their Level 2 or 3 qualifications as we are passionate about supporting the training and development of the next generation of teachers. The qualifications held by our team significantly exceed the requirements set by Ofsted.

For the health & safety of all of children, our team also receive annual Paediatric First Aid training.

WHAT CURRICULUM DO YOU FOLLOW?

We follow the Early Years Foundation Stage (EYFS). We plan our days around the individual interests of each child using the framework of the seven areas of learning and development, and ensuring they are delivered in a way which promote the characteristics of effective learning.

We also take inspiration from other teaching philosophies to ensure a well-rounded approach to our learning; from our Outdoor Exploration sessions inspired by Forest School, to the awe and wonder of natural resources with the Curiosity Approach.

WHAT IS THE ADMISSIONS POLICY?

If you would like to join our waiting list for a space at Tug Boat, please complete and return the waiting list form along with the registration fee. The registration fee is non-refundable and does not guarantee a space at the Nursery.

As a small Nursery, we offer show-arounds once we know a relevant space is becoming available. On accepting a place with us, a refundable deposit of £250 is payable within 5 working days to secure the space.

WHAT IS THE SETTLING PROCESS FOR MY CHILD?

When you start with us at Tug Boat, you will first be invited to come in for a "Hello meeting". Here you will tell us all about your child using an All About Me form. This meeting will be followed by your child's first settling session, which will last about an hour. At this time, you will spend some time in the room with your child as they explore their surroundings and meet their new teachers and other children. The second settling session will follow within the next day or two, and this time you will spend some time in the room with your child and then leave them to spend some time in there without you.

Each settling session lasts about one hour and is free of charge. Settling sessions should be scheduled as close to possible to your first day at Tug Boat to support the transition. Should we feel your child requires additional settling sessions, this will be discussed with the Nursery Manager.

WHAT DOES MY CHILD NEED FOR THEIR FIRST DAY?

On joining Tug Boat, please bring a small named bag with your child's belongings in. Parents are required to provide nappies, specific brands of formula or follow on milk (Aptamil is provided) and specific bottles/ teats, along with at least one complete change of spare clothes (including socks). Please ensure all belongings are clearly named.

IS THERE A UNIFORM?

Your child is not required to wear a uniform at Tug Boat. We do ask that you dress your child in clothes that you are happy for them to get messy in. We enjoy lots of messy play at Tug Boat so we also ask you to pack a set of spare clothes for your child every day – which should be labelled clearly with your child's name.

During the colder, wetter months, we ask you to supply appropriate warm gear such as gloves, waterproofs and wellies and swimming nappies and a sun hat for the warmer months. The children enjoy time outdoors every day, whatever the weather and we therefore ask you to ensure they have appropriate clothing to enable this.

WHAT IS THE KEY PERSON SYSTEM?

Every child in the Nursery has a key person. This teacher will be responsible for ensuring your child's learning and development is on track and will complete their learning journeys and end of term reports. As a small Nursery however, we pride ourselves in every member of Crew in your child's room knowing your child inside out, as well as their key person.

Your child's key person will be assigned once your child has been with us a few weeks. This gives us the opportunity to see if there is someone your child and you form a particular bond with, thereby ensuring the best interests of your child are always at the heart of the decisions we make.

HOW CAN I KEEP UP TO DATE WITH MY CHILD'S LEARNING?

We know that as parents you are the primary and most important educators for your child. At the end of every day at Tug Boat, you will receive detailed feedback on what your child has been doing. In addition, you can have access to your child's learning journey at any time, as well as the weekly plan of activities for the classroom. You will receive a monthly update of all the goings on in your child's classroom and there are daily meeting slots available at 8am and 5.30pm with our Crew should you wish to discuss any aspect of your child's learning and development with us.

We also welcome more informal communication with our families, so feel free to pop in for a chat with the Manager, send us an email or give us a call at any time.

HOW CAN I GET INVOLVED WITH NURSERY LIFE?

We love parents getting involved in daily life at Nursery. Whether it's coming in to read a story for the children or contributing ideas to the children's chosen topic of the month...there are lots of ways to get involved.

We also have a number of wonderful events during the year from various children's parties to our Tug Boat Talks and events such as Sports Day.

HOW CAN I ACCESS NURSERY POLICIES?

We have a comprehensive set of policies, some of which will be sent to you as part of your Welcome Pack on joining Tug Boat. Please speak to the Nursery Manager should you wish to see or discuss any specific Tug Boat policies.

DO YOU ACCEPT CHILDCARE VOUCHERS?

The nursery accepts tax-free government childcare vouchers. Parents can find out more at <https://www.gov.uk/tax-free-childcare> The Nursery also works with selective workplace benefits providers. Please speak with the Manager for further information.

DO YOU OFFER GOVERNMENT FUNDING?

At Tug Boat, we offer the Working Parent Entitlement funding as well as the Universal 15 hours entitlement for all ages and additional 15 hours funding (commonly known as “30 hours” for eligible 3-4 year olds as part of your total hours with us. Please speak to the Manager for further information.

Terms and Conditions

IN THESE TERMS AND CONDITIONS:

I) "THE NURSERY" IS THE LITTLE TUGBOAT NURSERY SITUATED AT 3 FINLAY STREET, LONDON, SW6 6HE.

II) "THE PARENTS" ARE THE PARENT(S), GUARDIAN(S) OR THE PERSON RESPONSIBLE FOR ANY CHILD ATTENDING THE NURSERY

1. WAITING LIST FEE

PARENTS MAY CHOOSE TO JOIN THE NURSERY'S WAITING LIST AND PAY A NON-REFUNDABLE FEE TO DO SO. THIS IS OPTIONAL. THE WAITING LIST FEE SHALL NOT BE RETURNABLE IF A PLACE CANNOT BE OFFERED ON THE DATE AND DAYS REQUIRED, OR SHOULD THE SPACE NOT SUBSEQUENTLY BE TAKEN

2. ACCEPTANCE OF A PLACE

A REFUNDABLE DEPOSIT OF £250 SHALL BE PAID BY THE PARENT/GUARDIAN TO THE NURSERY WITHIN 5 WORKING DAYS OF ACCEPTANCE OF THE OFFER. THE DEPOSIT SHALL BE RETURNED TO THE PARENT/GUARDIAN ON LEAVING THE NURSERY, MINUS ANY OUTSTANDING COSTS. THE DEPOSIT IS NOT DEDUCTIBLE FROM THE FIRST MONTH'S FEES AND SHALL NOT BE RETURNABLE UNLESS PROPER NOTICE IS GIVEN FOR TERMINATION OF CONTRACT. THE NURSERY'S NOTICE PERIOD IS 8 WEEKS.

3. PAYMENT OF NURSERY FEES

I) PAYMENT OF NURSERY FEES TO THE NURSERY FOR THE CHILD'S ATTENDANCE AT THE NURSERY SHALL BE MADE BY THE PARENT/GUARDIAN MONTHLY, IN ADVANCE AND STRICTLY BY THE FIRST DAY OF EACH MONTH (THE DUE DATE).

II) IF THE PAYMENT OF FEES REFERRED TO IN ABOVE SHALL BE OUTSTANDING FOR MORE THAN 5 DAYS THEN THE NURSERY WILL CHARGE AN 8% INTEREST CHARGE FOR LATE PAYMENT, UNTIL THE FEES ARE PAID IN FULL

III) SHOULD PAYMENT CONTINUE TO REMAIN OUTSTANDING, THE NURSERY MAY SERVE 14 DAYS' NOTICE IN WRITING TO TERMINATE THIS CONTRACT. UPON TERMINATION OF THIS CONTRACT THE CHILD SHALL CEASE FORTHWITH TO BE ADMITTED TO THE NURSERY, AND THE NURSERY'S NOTICE TO SO TERMINATE SHALL BE REGARDED AS A FORMAL DEMAND FOR ALL OUTSTANDING MONIES

IV) IN THE EVENT OF THE FEES OR ANY OTHER SUM PAYABLE BY THE PARENTS TO THE NURSERY BEING UNPAID AND OUTSTANDING THE CHILD MAY, ON NOTICE IN WRITING TO THE PARENTS, BE REQUIRED TO CEASE ATTENDANCE AT THE NURSERY UNTIL PAYMENT OF THE FULL AMOUNT OWING IS PAID TO THE NURSERY

V) THE NURSERY RESERVES THE RIGHT TO INCREASE THE SAID FEES AT ANY TIME UPON GIVING TWO CALENDAR MONTH'S WRITTEN NOTICE OF THE INCREASE TO THE PARENT/GUARDIANS

VI) THE NURSERY DOES NOT PERMIT THE PRO-RATA REDUCTION OF FEES FOR ANY REASON. THIS INCLUDES SICKNESS, HOLIDAYS OR ANY OTHER ABSENCE FROM NURSERY. THE PARENT/GUARDIAN IS THEREFORE OBLIGED TO MAKE FULL PAYMENT. IN THE EVENT OF PAYMENT NOT BEING MADE THEN THE NURSERY RESERVES ITS RIGHT TO TERMINATE THIS AGREEMENT IN ACCORDANCE WITH CLAUSE 3

VII) LATE FEES ARE PAYABLE FOR COLLECTION OF CHILDREN AFTER 6.30PM. THESE FEES ARE PAID DIRECTLY TO THE STAFF REQUIRED TO STAY BEHIND, IN LINE WITH THE NURSERY'S LATE COLLECTION POLICY.

VII) PLEASE SEE SEPARATE INFORMATION REGARDING FUNDING AT TUG BOAT NURSERY. FUNDED PLACES ARE LIMITED AND ARE SUBJECT TO NURSERY AVAILABILITY AND THE NURSERY'S T&C'S HEREWITH.

4. OPENING HOURS AND NURSERY ATTENDANCE

I) THE NURSERY ONLY OFFERS FULL DAY SESSIONS FROM 8AM – 6.30PM AND REQUIRES A MINIMUM OF 2 DAYS ATTENDANCE PER WEEK

II) ALL NURSERY PLACES MUST BE TAKEN WITH A MONDAY OR FRIDAY

III) THE USUAL OPENING HOURS OF THE NURSERY ARE 8AM UNTIL 6.30PM. IN EXCEPTIONAL CIRCUMSTANCES, THE NURSERY RESERVES THE RIGHT TO OPEN LATER OR CLOSE EARLIER, AND WILL ATTEMPT TO ADVISE PARENTS OF THESE CHANGES AT LEAST 5 WORKING DAYS IN ADVANCE

IV) THE NURSERY WILL CLOSE AT 5PM ON THE DAY OF THE CHILDREN'S ANNUAL CHRISTMAS PARTY

V) THE NURSERY WILL BE CLOSED ON UK BANK HOLIDAYS AND FOR AT LEAST 5 WORKING DAYS AT CHRISTMAS. THESE DAYS ARE NOT CHARGED. FEES ARE PRO-RATED EQUALLY ACROSS 12 MONTHS OF THE YEAR.

VI) DAYS OF ATTENDANCE MAY NOT BE REDUCED WITHIN THE FIRST 3 MONTHS OF ATTENDANCE, UNLESS THE NURSERY IS ABLE TO FILL THESE FROM THE CURRENT WAITING LIST. THEN THE FULL AND PROPER NOTICE OF 8 WEEKS IS REQUIRED IN WRITING

VII) ANY CHANGES TO ATTENDANCE OR SERVICE REQUIREMENTS ARE SUBJECT TO AVAILABILITY. THE NURSERY IS UNDER NO OBLIGATION TO MAKE CHANGES FROM THAT AGREED IN WRITING IN THE PARENT WELCOME PACK SENT ON ACCEPTANCE OF THE PLACE AND MAY REQUIRE RE-APPLICATION FOR A PLACE.

VIII) CHILDREN ACCESSING FUNDING AT TUG BOAT NURSERY ARE NOT SUBSEQUENTLY PERMITTED TO OPT OUT OF ADDITIONAL SERVICES THEY HAVE OPTED IN TO ON ACCEPTING A FUNDED PLACE. THIS WILL REQUIRE RE-APPLYING FOR A PLACE. FUNDED PLACES ARE LIMITED AND ARE SUBJECT TO NURSERY AVAILABILITY.

5. CANCELLATION/ TERMINATION

I) PARENTS SHALL GIVE FULL AND PROPER 8 FULL WEEKS' NOTICE IN WRITING WHEN THEY WISH TO REDUCE THE NUMBER OF DAYS THEIR CHILD ATTENDS THE NURSERY. CANCELLATION WITHOUT PROPER AND FULL NOTICE SHALL RENDER THE PARENTS LIABLE TO FULL PAYMENT OF THE 8 WEEKS FEES IN ALL CASES

II) ONCE THE NURSERY HAS RECEIVED A REFUNDABLE DEPOSIT FOR THE OFFERED PLACE, PARENTS SHALL GIVE 8 FULL WEEKS' NOTICE IN WRITING WHEN THEY WISH TO WITHDRAW THEIR CHILD FROM THE NURSERY OR NOT TAKE UP THE PLACE. CANCELLATION WITHOUT PROPER AND FULL NOTICE SHALL RENDER THE PARENTS LIABLE TO FULL PAYMENT OF THE 8 WEEKS FEES IN ALL CASES.

6. NON-SOLICITATION OF STAFF

THE PARENT/GUARDIAN OF THE CHILD, THE SUBJECT OF THIS REGISTRATION FORM, HEREBY AGREES THAT DURING THE TERM OF THIS AGREEMENT AND FOR THE PERIOD OF 12 MONTHS FOLLOWING ITS TERMINATION (HOWSOEVER TERMINATED) THAT THEY WILL NOT SEEK TO EMPLOY, ENTICE AWAY OR ATTEMPT TO ENTICE AWAY FROM THE EMPLOYMENT OF LITTLE TUGBOAT NURSERY LTD ('THE COMPANY') ANY PERSON OR PERSONS EMPLOYED BY THE COMPANY AT THE DATE OF TERMINATION OR IN THE 6 MONTHS PRIOR, OF THE AGREEMENT BETWEEN THE COMPANY AND THE PARENT/GUARDIAN. IF THE PARENT/GUARDIAN SHALL BREACH THE AFOREMENTIONED CLAUSE THEN HE/SHE SHALL INDEMNIFY THE COMPANY FULLY IN RESPECT OF ALL AND ANY COSTS, CLAIMS, DAMAGES AND EXPENSES INCURRED BY THE COMPANY AS A RESULT OF THE AFOREMENTIONED BREACH TO INCLUDE THE COST OF REPLACING THE SAID MEMBER OF STAFF TO INCLUDE, BUT NOT LIMITED TO AGENCY FEES, ADVERTISING COSTS, MANAGEMENT TIME IN INTERVIEWING AND ALL SUCH OTHER COSTS REASONABLY AND NECESSARILY INCURRED BY THE COMPANY IN REPLACING THE MEMBER OF STAFF TOGETHER WITH ALL LEGAL FEES AND DISBURSEMENTS.

7. GENERAL

I) THE NURSERY OPERATES IN COMPLIANCE WITH THE EARLY YEARS FOUNDATION STAGE AND CHILDREN WILL BE CARED FOR WITHIN THIS FRAMEWORK. PARENTS ARE REQUIRED TO COMPLY WITH ALL NURSERY POLICIES AND PROCEDURES. THESE ARE SENT AS PART OF YOUR WELCOME PACK AND ARE ALSO AVAILABLE TO VIEW AT A PRE-ARRANGED TIME WITH THE NURSERY MANAGER.

II) PARENTS ARE REQUIRED TO INFORM THE NURSERY OF ANY CHANGES OF CIRCUMSTANCES/ DETAILS IMMEDIATELY SO THAT THE NURSERY CAN KEEP THE CHILD'S REGISTRATION DETAILS UP TO DATE

III) PARENTS ARE REQUIRED TO DISCLOSE TO THE NURSERY AS SOON AS THEY ARE AWARE OF ANY ILLNESS, ABNORMALITY, INFECTION OR ALLERGY THAT AFFECTS OR MAY AFFECT THE CHILD OR OTHER CHILDREN OR STAFF WITHIN THE NURSERY. THIS INCLUDES, BUT IS NOT LIMITED TO, NOTIFIABLE DISEASES AS LISTED BY PUBLIC HEALTH ENGLAND.

IV) THE NURSERY RESERVES THE RIGHT AT ANY TIME TO REFUSE ADMISSION TO AND/OR SEND HOME ANY CHILD WHOM THE NURSERY CONSIDERS IS OR MAY BE UNWELL OR SUFFERING FROM ANY CONTAGIOUS ILLNESS

V) THE CHILD WILL ONLY BE RETURNED TO THE CUSTODY OF THE PERSON(S) NAMED ON THE PERSONAL DETAILS FORM UNLESS PRIOR ARRANGEMENTS ARE MADE BY THE PARENTS WITH THE NURSERY. PLEASE READ OUR CHILD COLLECTION POLICY EMAILED TO YOU ON JOINING THE NURSERY

VI) WHEN PROVIDING NURSERY SERVICES, THE NURSERY MAY COLLECT INFORMATION ON INDIVIDUALS CONNECTED TO YOUR CHILD FROM YOU. THIS INCLUDES NANNIES, FAMILY MEMBERS OR FRIENDS WHO YOU LIST AS EMERGENCY CONTACTS. PLEASE ENSURE THESE INDIVIDUALS HAVE BEEN MADE AWARE OF OUR PRIVACY NOTICE. IF YOU, OR ANYONE ELSE ON YOUR BEHALF, HAS PROVIDED OR PROVIDES PERSONAL INFORMATION ON AN INDIVIDUAL TO US, YOU OR THEY MUST FIRST ENSURE THAT YOU OR THEY HAVE THE AUTHORITY TO DO SO

VII) WE WILL USE THE CONTACT DETAILS YOU HAVE PROVIDED US TO REGULARLY GET IN TOUCH WITH YOU TO UPDATE YOU ABOUT THE NURSERY, GENERAL DEVELOPMENTS AND TO INFORM YOU OF ANY TOPICS RELATING TO YOUR CHILD'S HEALTH AND WELLBEING.

VIII) PARENTS ARE NOT PERMITTED TO SHARE ANY IDENTIFYING PHOTOGRAPHS OR RECORDINGS OF THE SETTING OR ANY CHILD AT THE SETTING FOR ANY PURPOSE AND ARE PERMITTED FROM TAKING ANY PHOTOS WITHOUT PRIOR CONSENT FROM THE MANAGER

ACCEPTANCE

THE PARENT/ GUARDIAN HAVE READ AND UNDERSTAND THE TERMS & CONDITIONS CONTAINED AND UNDERTAKE TO BE BOUND BY THE SAME.

SIGNATURE

DATE

NAME

3 Finlay Street, SW6 6HE
0207 731 6648

PLEASE DO GET IN TOUCH WITH OUR WONDERFUL MANAGEMENT TEAM IF YOU
WOULD LIKE TO FIND OUT MORE

manager@littletugboatnursery.co.uk

0207 731 6648

We look forward to meeting you soon!